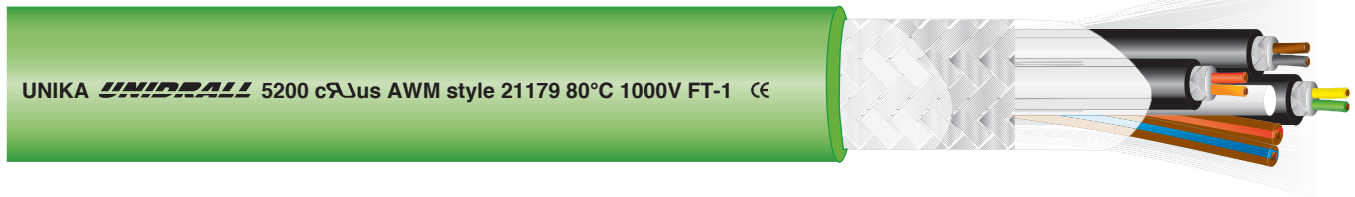


UNIDRALL® 5200

Cavi per la trasmissione del segnale
Signal transmission cables for Servo Motors



UNIKA UNIDRALL 5200 cULus AWM style 21179 80°C 1000V FT-1 CE

	Dati tecnici	Technical data
Conduttore Conductor	1 Rame rosso secondo CEI EN 60228 (CEI 20-29) classe 6	Bare copper complying with CEI EN 60228 (CEI 20-29) class 6
Isolamento ed identificazione Insulation and power core identification	2 TPE-E, TPE-O, PP, anime colorate con codice personalizzato	TPE-E, TPE-O, PP, coloured cores with customized code
Schermatura totale Overall shielding	3 Treccia di fili di rame stagnato. Copertura maggiore 85%	Tinned copper wire braid. Coverage above 85%
Guaina Jacket	4 PVC classe 43 secondo UL 1581. Colore verde RAL 6018	PVC class 43 according to UL1581. Colour green RAL 6018
Tensione di lavoro Operating voltage	30÷300 V	30÷300 V
Tensione di prova Test voltage	1000 Vcc	1000 Vcc
Resistenza di isolamento Insulation resistance	> 20 MΩ·km	> 20 MΩ·km
Temperatura di lavoro Operating temperature	Posa fissa -10 ÷ 80 °C Posa dinamica in catena -5 ÷ 80 °C	Fixed application -10 ÷ 80 °C Dynamic application into chain -5 ÷ 80 °C
Velocità [m/min] Speed	250	250
Accelerazione/ decelerazione [m/s²] Acceleration/ deceleration [m/s²]	30	30
Raggio minimo di curvatura Minimum bending radius	Posa fissa 5 x diametro esterno Posa dinamica in catena 7,5 x diametro esterno	Fixed application 5 x outer diameter Dynamic application into chain 7,5 x outer diameter
Comportamento al fuoco Fire behaviour	Prova di non propagazione fiamma UL 758 e prova FT-1 CSA C.22.2 n°210	Cable flame test per UL 758 and FT-1 test per CSA C.22.2 n°210
Emissione gas alogenidrici Halogen gas emission	≤ 18% IEC 60754, CEI EN 50267-2	≤ 18% IEC 60754, CEI EN 50267-2
Resistenza agli oli industriali Industrial oil resistance	IEC CEI EN 60811-2-1	IEC CEI EN 60811-2-1
Resistenza all'acqua Water resistance	IEC CEI EN 60811-1-3	IEC CEI EN 60811-1-3

Questi cavi si utilizzano per il controllo dei servomotori delle macchine utensili, in catene di montaggio, linee di produzione, ecc. tramite il segnale proveniente dall'encoder, revolver, tachimetrica

La schermatura è ottimizzata in modo da ridurre al minimo le interferenze elettromagnetiche provenienti dagli altri cavi e dalle apparecchiature elettroniche. Sono idonei ad essere installati in catene portacavi con buone prestazioni meccaniche. I cavi UNIDRALL 5200, previsti a catalogo, comprendono le tipologie più diffuse per applicazioni ai servomotori. Invitiamo ad interpellarci per ogni applicazione particolare.

Approvato DESINA.

**Approvato UL/CSA:
80°C 1000V style 21179**

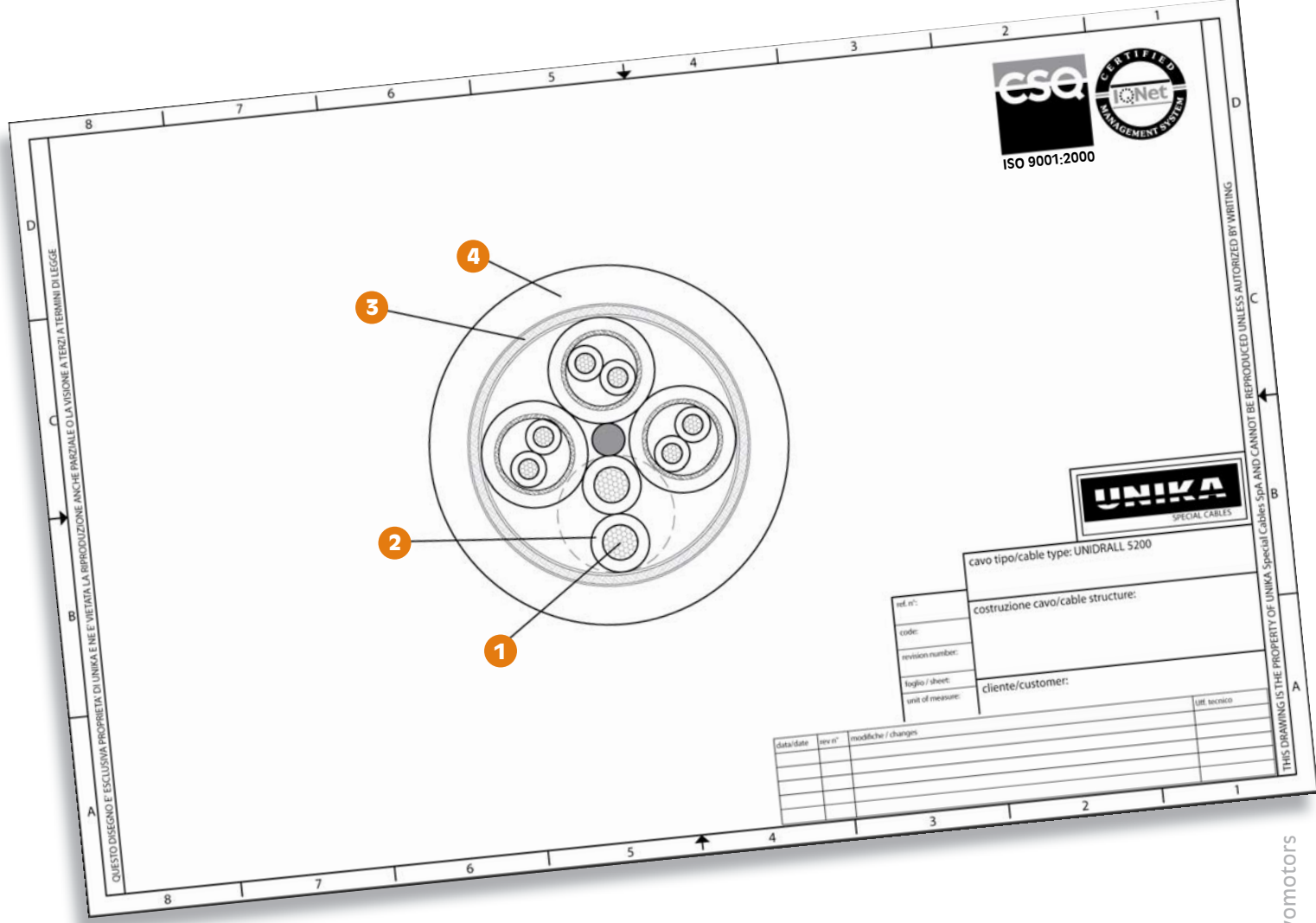
Such cables are suitable for controlling of servomotors of tooling machines, assembly lines, production lines, ecc. whenever advantages coming from cable at low capacitance are desirable.

Screening is optimised in order to minimize electromagnetic interferences coming from other cables and electronic equipment. They are suitable to be installed into travelling chain with good dynamic performances. UNIDRALL 5200 cables, inserted into the catalogue, include the most common applications to servomotors.

We invite you to consult us for every particular application.

DESINA Approved.

**UL and CSA approvals:
80°C 1000V style 21179**



codice code	formazione assembly	applicazione application	codice colori colour code	diametro diameter (mm)	massa Cu Cu mass (Kg/km)	massa cavo cable mass (Kg/km)
3G001	9x0,50	Taco INDRAMAT	DIN 47100	8,5	81	140
3G002	10x2x0,18	SIEMENS	DIN 47100	9,7	50	109
3G003	8x2x0,25	Resolver	DIN 47100	8,6	70	130
3G004	3x(2x0,14)+2x0,50+4x0,14+4x0,25	Resolver SIEMENS	(red-orange, brown-black, green-yellow) + (brown/red, brown/blue) + (blue, grey, white/black, white/yellow) + (brown/yellow, brown/grey, green/red, green/black)	9,7	92	145
3G005	3x(2x0,14)+2x0,50+4x0,14	Resolver SIEMENS	(red-orange, brown-black, green-yellow) + (brown/red, brown/blue) + (blue, grey, white/black, white/yellow)	8,8	60	100
3G006	3x(2x0,14)+2x0,50	Encoder HEIDENHAIN	(red-orange, brown-black, green-yellow) + (brown/red, brown/blue)	8,6	4,8	95
3G007	3x(2x0,14)+2x(0,50)	Encoder HEIDENHAIN	(red-orange, brown-black, green-yellow) + (brown/red, brown/blue)	8,8	75	130
3G008	3x(2x0,14)+2x1	Encoder HEIDENHAIN	(red-orange, brown-black, green-yellow) + (brown/red, brown/blue)	8,8	60	95
3G009	3x(2x0,14)+2x(1)	Encoder HEIDENHAIN	(red-orange, brown-black, green-yellow) + (brown/red, brown/blue)	9,5	80	126
3G010	4x2x0,25+2x0,50	Encoder INDRAMAT	(blue-red, green-grey, brown-red/green, violet-white/brown) + (white/brown, white/black)	8,0	65	82

codice code	formazione assembly	applicazione application	codice colori colour code	diametro diameter (mm)	massa Cu Cu mass (Kg/km)	massa cavo cablemass (Kg/km)
3G011	4x2x0,38+4x0,50	Encoder SIEMENS	(white/blue-orange, red-violet, blue-brown, black-yellow) + (green, white/black, white/red, white/yellow)	8,9	80	140
3G012	5x2x0,14+2x0,50	BAUMUELLER	(green-yellow, grey-pink, blue-red, black-violet, grey/pink-red/blue) + (blue, rosso)	8,0	51	105
3G013	4x2x0,25+2x1	Encoder INDRAMAT	(blue-red, green-grey, brown-red/green, violet-white/brown) + (white/brown, white/black)	8,8	75	101
3G014	10x0,14+2x0,50	HEIDENHAIN	(DIN 47100) + (white, brown)	7,2	38	83
3G015	10x0,14+4x0,50	HEIDENHAIN	(DIN 47100) + (white, brown, blue, black)	7,7	46	99
3G016	2x2x0,34	Encoder YASKAWA	DIN 47100	6,4	30	67
3G017	(2x0,34)+6x2x0,34+2x1	Encoder CONTROL TECHNIQUE	(white, brown) + (green-yellow, grey-pink, blue-red, black-violet, green/white-green/brown, grey/pink-blue/red) + (red, blue)	10,8	90	165
3G018	4x(2x0,34)	Resolver	(red-black, white-black, green-black, blue-black)	11,2	94	180
3G019	8x0,34		DIN 47100	7,0	40	82
3G020	2x0,18 + 5x0,34		(white-brown) + (green, yellow, grey, pink, blue)	7,1	34	67
3G021	6x2x0,14+2x0,50+1x0,50	Encoder BALDOR	(grey-grey/black, yellow-yellow/black, pinkpink/black, brown, brown/white, green-green/white, violet-violet/white) + (blue, red) + orange	8,9	55	111
3G022	(2x0,50)+2x(2x0,14)+1x0,50	Resolver SSI BALDOR	(red-blue) + (green-yellow, pink-grey) + orange	7,6	50	95
3G023	2x(2x0,14)+2x0,50+2x2x0,14+1x0,50	ENDAT BALDOR	(violet, violet-white) + (red, blue) + (pink, pink/black, brown, brown/black) + orange	8,7	53	115

codice code	formazione assembly	applicazione application	codice colori colour code	diametro diameter (mm)	massa Cu Cu mass (Kg/km)	massa cavo cablemass (Kg/km)
3G024	3x(2x0,25)	Resolver	DIN 47100	9,1	72	105
3G025	4x(2x0,25)	Resolver	DIN 47100	10,2	86	125
3G026	6x(2x0,25)	Resolver	DIN 47100	12,3	111	170
3G027	8x(2x0,25)	Resolver	DIN 47100	15,6	150	235
3G029	4x2x0,14+4x0,50	Encoder HEIDENHAIN	(green-brown)+(yellow-violet)+ (pink-grey)+(red-black) + white, blue, white/green, brown/green	8,0	60	80
3G030	6x0,34		DIN 47100	6,1	31	70
3G032	12x0,25	Tachimetrica	DIN 47100	6,9	43	90
3G034	4x2x0,25	Resolver DENAHER	(white-brown, green-yellow, grey-pink, blue-red)	7,2	32	76
3G035	2x0,34		(red, white)	4,7	15	35
3G042	(4x0,14)+4x2x0,14+4x0,50	HEIDENHAIM	(red-black, grey-pink, yellow-violet, brown-green)	8,0	60	100
3G050	(6x0,14)+4x2x0,14+4x0,50	Encoder BOSCH	(Green/black, yellow/black, blue/black, red/black, white/black, pink/black)+ (brown-green, red-black, pink-grey, violet-yellow)+(white, white/green, blue, brown/green)	9,5	90	240
3G051	8x2x0,18		DIN 47100	7,8	55	110