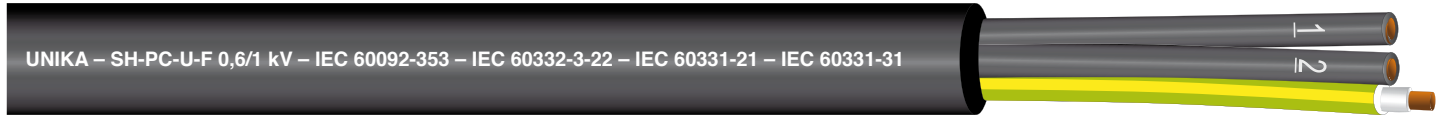
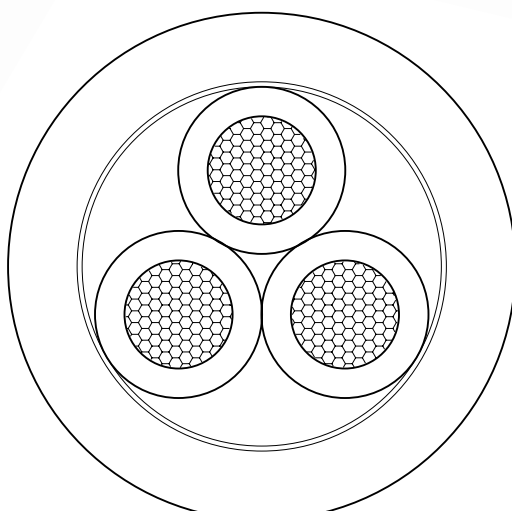


SH-PC-U-F

Cavi unipolari e multipolari, non armati, resistenti al fuoco, di potenza e controllo 0,6/1kV
Single and multicore, unarmoured, fire resisting power and control shipboard cables rated 0,6/1kV



Technical data	
Conductor	Bare (or tinned copper) class 5 according to IEC 60228
Insulation	Mica tape, HF XLPE compound according to IEC 60092-351 Thickness according to IEC 60092-353 amend. 1 table 1
Core identification (preferential)	1 core: black 2 cores: brown, blue 3 cores: black, grey, brown or (blue or green/yellow) 4 cores: brown, black, grey, blue or green/yellow 5 cores: blue, brown, black, grey, black or green/yellow From 5 cores: black numbered (with or without green/yellow)
Sheath	SHF 1 compound according to IEC 60092-359 Thickness according to IEC 60092-353 clause 3.7.3 Colour: black (or other colour agreed) Outer diameter according to IEC 60092-350 annex D
Marking	UNIKA (Italy) – SH-PC-U-F 0,6/1 kV (core number) x (cross-section) – IEC 60092-353 – IEC 60332-3-22 – IEC 60331-21 – IEC 60331-31 – traceability code
Rated conductor temperature for fixed installation	-40 ÷ 90°C
Minimum installation temperature	-15°C
Minimum bending radius (according to IEC 60092-352 table 4)	4D for cables having overall diameter not above 25 mm 6D for cables having overall diameter above 25 mm
Fire behaviour	IEC 60332-3-22 not fire propagation IEC 60332-1-2 not flame propagation IEC 60331-21, IEC 60331-31 fire resistance IEC 60754-1 halogen content IEC 60754-2 pH and conductivity IEC 60684-2 fluorine content IEC 61034-1 and 61034-2 smoke transmittance



code (*)	conductor number x cross-section [n x mm ²]	overall diameter [mm]	copper mass [Kg/km]	cable mass [Kg/km]
N4017	1x1,5	5,6	13,7	47,2
N4027	2x1,5	9,3	27,3	92,9
N4037	3x1,5	9,8	41,0	119,3
N4047	4x1,5	10,9	54,7	152,3
N4057	5x1,5	12,0	68,4	184,0
N4077	7x1,5	13,0	95,7	235,9
N4107	10x1,5	16,9	136,7	47,2
N4127	12x1,5	17,5	164,1	396,9
N4147	14x1,5	18,4	191,4	450,0
N4197	19x1,5	20,7	259,8	593,5
N4247	24x1,5	24,4	328,2	748,4
N4307	30x1,5	25,8	410,2	898,4
N4377	37x1,5	27,9	506,0	1079,5
N4019	1x2,5	5,9	22,2	58,1
N4029	2x2,5	10,2	44,3	121,6
N4039	3x2,5	10,8	66,5	159,0
N4049	4x2,5	11,8	88,6	198,2
N4059	5x2,5	12,9	110,8	237,8
N4079	7x2,5	14,3	155,1	320,1
N4109	10x2,5	18,1	221,6	442,4
N4129	12x2,5	19,1	265,9	532,7
N4149	14x2,5	19,9	310,3	597,0
N4199	19x2,5	22,6	421,1	802,7
N4249	24x2,5	26,7	531,9	1015,9
N4309	30x2,5	28,3	664,9	1230,3
N4379	37x2,5	30,8	820,0	1499,6
N401A	1x4	6,7	38,0	82,7
N402A	2x4	11,4	76,0	165,5
N403A	3x4	12,1	114,1	222,2
N404A	4x4	13,4	152,1	285,4
N405A	5x4	14,7	190,1	346,0
N401B	1x6	7,0	48,9	96,2
N402B	2x6	12,1	97,8	194,9
N403B	3x6	13,0	146,7	268,8
N404B	4x6	14,3	195,6	342,9
N405B	5x6	15,9	244,4	424,1
N401D	1x10	8,1	89,3	148,0

code (*)	conductor number x cross-section [n x mm ²]	overall diameter [mm]	copper mass [Kg/km]	cable mass [Kg/km]
N402D	2x10	14,4	178,7	304,6
N403D	3x10	15,3	268,0	420,3
N404D	4x10	17,0	357,3	547,1
N405D	5x10	18,7	446,6	667,8
N401E	1x16	9,3	138,8	213,0
N402E	2x16	16,7	289,7	447,2
N403E	3x16	17,7	434,6	621,8
N404E	4x16	19,7	579,4	813,2
N405E	5x16	21,7	724,3	997,3
N401F	1x25	11,2	211,2	310,9
N402F	2x25	20,7	422,5	649,4
N403F	3x25	22,0	633,7	909,8
N404F	4x25	24,5	845,0	1190,9
N405F	5x25	27,2	1056,2	1473,2
N401G	1x35	12,7	304,2	426,3
N402G	2x35	22,7	625,3	878,4
N403G	3x35	24,1	937,9	1241,0
N404G	4x35	26,9	1250,6	1632,9
N405G	5x35	29,9	1563,2	2024,5
N401H	1x50	14,2	430,9	572,6
N402H	2x50	26,4	912,6	1231,6
N403H	3x50	28,3	1368,9	1768,1
N404H	4x50	31,5	1825,2	2321,5
N405H	5x50	35,0	2281,4	2878,3
N401J	1x70	16,2	607,3	781,5
N402J	2x70	30,3	1361,8	1744,0
N403J	3x70	32,5	2042,7	2520,3
N404J	4x70	36,1	2723,6	3308,2
N401K	1x95	18,7	805,4	1036,0
N402K	2x95	34,2	1743,1	2221,4
N403K	3x95	36,4	2614,6	3187,3
N404K	4x95	40,8	3486,1	4223,3
N401L	1x120	20,6	1039,3	1306,3
N402L	2x120	39,7	2201,8	2834,5
N404L	3x120	42,5	3302,7	4095,2
N401M	1x150	22,8	1290,1	1608,7
N401N	1x185	25,5	1648,5	2036,1
N401P	1x240	28,1	2078,5	2533,6

UNIKA
SPECIAL CABLES

cavo tipo/cable type: ISH-PC-U-F

costruzione cavo/cable structure:

cliente/customer:

THIS DRAWING IS THE PROPERTY OF UNIKA Special Cables SpA AND CANNOT BE REPRODUCED UNLESS AUTHORIZED BY WRITING

(*) Add letter G at the code for cables having green/yellow conductor
 (**) Current ampacity is referred to ambient temperature of 45 °C and based upon IEC 60092-352. For two or more circuits, derating factors should be taken into account. (see type SH-PC-U)

Further formation and cross-section are available upon request